

LACH³



NEW UNITED STATES COURTHOUSE - LOS ANGELES, CA

December 2014

The activities that are occurring on the site are beginning to change from the repetitive activities of the past few months. Although the steel erection and shear wall construction are continuing, we are beginning to see activities that relate to the mechanical and electrical trades becoming more prominent. Below is a photo of the Chillers in the Basement that were set on the pads the same day on which they were delivered to the site. The delivery and movement of the units through the Basement was well planned and the placement went well.



Other concrete pads were placed this month for equipment to be delivered in the near future and for electrical panels and distribution boards in the main electrical room of the Basement. Overhead installation of the mechanical piping and electrical conduit continues in the Basement and has made good strides towards a completion in early 2015. More Fan Coil units were set this month throughout the area. On the upper levels, sprinkler piping is in progress on Level 2 and ductwork has been installed for the Mezzanine Level. This work is possible with the progress made with the spray applied fireproofing which is now working on Level 3, the underside of Level 4.

The steel erection is continuing with the start of Tier #5, Levels 9 and 10, this month which will complete in early January. At that time, the last Tier will start which will top out the building by mid-February. The metal decking is following closely the steel welding to provide safe working surfaces for the ironworkers. The metal decking is complete up through Level 7 permitting the placement of in-slab inserts and sleeves. The serrated slab edges to match the curtain wall design are nearing completion on Level 7 as seen by the photo on the next page. The concrete slab placements are complete through Level 5 with half of Level 6 in place as well.



LACH³

December 2014



The shear wall placements are complete up to the bottom of Level 6 with the rebar work in progress up to Level 7. The shotcrete placement of the perimeter shear walls, as seen below started up again this month with the north perimeter wall up to the street level being completed and will continue south along Hill Street. This work will permit the detensioning and removal of the tiebacks related to the shoring system.





LACH³

December 2014

For the Loading Dock area, the wall forms are being installed to form the outline of the dock area (photo below) which will create the 4'-0 height typically required for a dock area. Within this height, the plumbing has been started to accommodate the drains and waste lines to serve the future facilities.



Design & Construction Activities Completed This Period

- Document Package 12 was released for construction.
- Commenced steel erection of Levels 9 and 10
- Completed shear walls up to Level 6
- Completed concrete slabs up through the east half of Level 6
- Spray-applied fireproofing on Level 2, the framing for underside of Level 3
- Commenced Fire Sprinkler Piping for the Level 2, below the framing of Level 3
- Commenced ductwork installation for the mechanical room of the Mezzanine Level east
- Started the setting of door frames in the perimeter CMU walls of Level 1

Activities for Next Period

- Complete slab on Level 6 and place concrete for slab on Level 7
- Complete shear wall concrete placement up through Level 7



LACH³

December 2014

- Complete steel erection of Tier #5, Levels 9 and 10 and start Tier #6, Penthouse and Roof Levels
- Start the structural perimeter walls for the Cafeteria and Vehicle Sallyport area.
- Continue MEP Installation in the Basement areas with delivery of more equipment
- Fireproofing on Level 4, the underside of Level 5

Project Milestones

- Delivered and set Chiller Units – 17 Dec 2014
- Commenced erection of Tier #5, Levels 9 & 10 – 15 Dec 2014

Sustainability Features: Serrated Curtain Wall

In January 2015 GSA, Jacobs, Clark & SOM will have the opportunity to visit Benson's manufacturing facility in Mexico. The team will observe the fabrication process for the serrated curtain wall that will become a defining architectural and sustainable feature of the Courthouse.

The serrated units were developed as a strategy to minimize the solar radiation emitted into the building by positioning the panels 38 degrees from North while keeping the building mass parallel to the street grid. This method allows the vision panels to be positioned at a true north/south orientation while realigning the other facet of the serration to roughly an east/west orientation and glazing them with thermally opaque materials, thus resisting the maximum solar exposure and greatly reducing the solar gain into the building.

The facade is comprised of a combination of triangular and V-shaped unitized aluminum frames in which the glazed materials are varied based on solar exposure and programmatic use behind each panel. Each of the court floors have a floor to floor height of 20'-0", which allows for an intermediate horizontal mullion located at the 10'-0" mid-panel height which corresponds to the perimeter ceiling locations along the exterior skin. This allows the exterior wall panels to be glazed differently than those above, affording additional opportunity to tune the performance and aesthetic qualities of the wall to the function behind.

The serrated curtainwall was developed in conjunction with the DB Subcontractor, Benson Industries. Benson analyzed the building envelope curtainwall system throughout development in regards to heat transfer, air leakage, operational performance, and maintenance of the

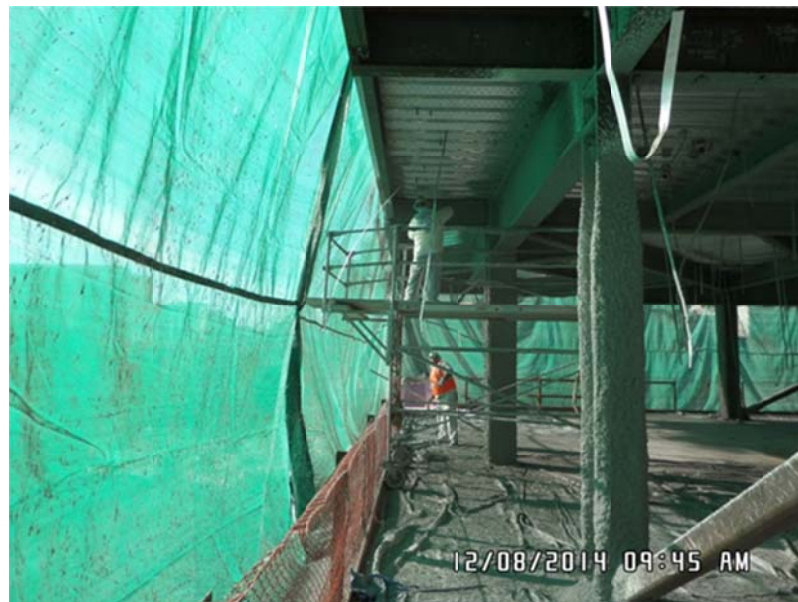


LACH³

December 2014

unitized wall system. This high performance design element contributes overall to the energy performance of the building as well as toward achieving LEED credits in the Energy and Atmosphere, and Indoor Environmental Quality categories. Extensive commissioning will be conducted once installed to ensure the expected performance of the system.

Progress Photos



Spray Applied Fireproofing – Level 2 East



LACH³

December 2014



Courtroom Mock-up Over-view



View of South Elevation

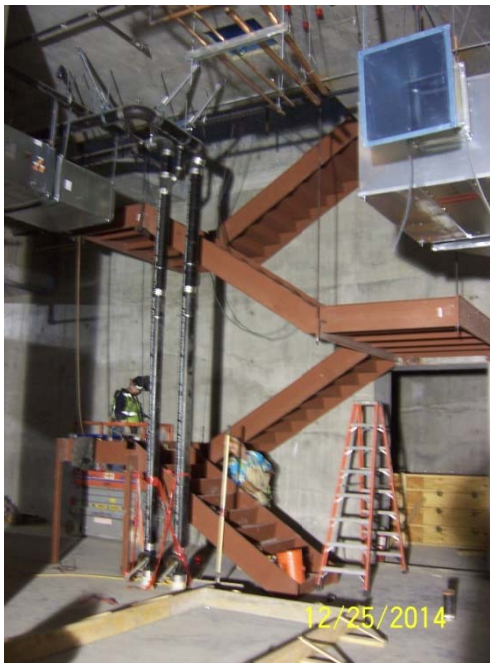


LACH³

December 2014



Overhead Ductwork at Courtroom Mockup



Stair #20 in Basement