



LACH³



NEW UNITED STATES COURTHOUSE - LOS ANGELES, CA

APRIL 2015

The placement of the concrete shear walls completed to the underside of the level designated by the Structural Engineer to permit the removal of the temporary columns. At this time, only the west side slab for the Penthouse Level remains to be placed and it is scheduled for May 4th. The welding of the roof trusses at the Roof Level continued this month and will complete the first week of May. Releasing and removal of the temporary columns is expected to commence no later than 11 May 2015.

Other structural related activities this month was the concrete placement for the perimeter Board Form wall at the Vehicle Sallyport and the wall form at the Jury Assembly area. Each had one wall completed and formwork continuing. These areas will receive much attention as we move into May. Other exterior wall activity is the installation of the finished Indiana limestone at the base of the building. This same material will eventually wrap into the main lobby to provide the finish for the interior walls.



Placing Concrete for Sallyport Wall

Glazed masonry installation for the main Detention Block has made good progress this month and will continue throughout May and will move to the Attorney Interview Rooms shortly. Detention Door Frames are being set in conjunction with the GMU and the in-wall electrical rough-in is being coordinated.

The main lobby has scaffolding installed up to Level 6 to accommodate the required access to placement of the glass handrail "shoe" and the track for the fire shutters at the specific levels. This scaffolding will continue up to Level 10 following the placement of the fire shutters on the upper levels. The fire shutters are designed to close off the Light Well at every other level for smoke control. Three of the six fire shutters are now in place. As a point of interest, each fire shutters weighs in excess of 25,000 LBS.

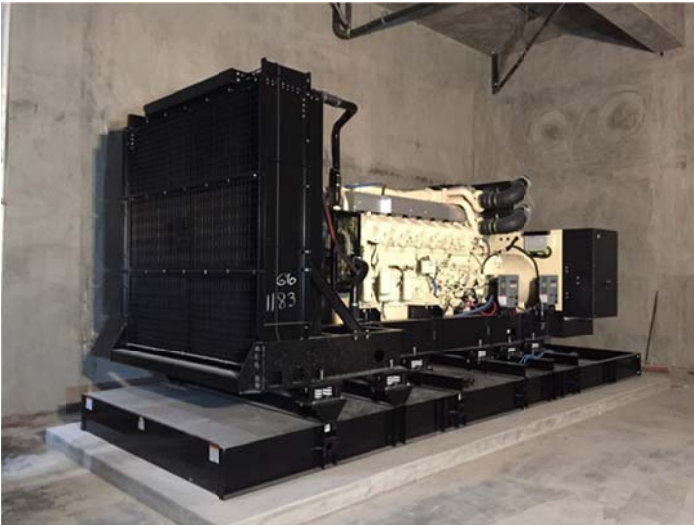


LACH³

APRIL 2015

Layout and installation of the wall framing for the “Priority” Rooms and Courtroom Attorney/Witness Rooms is continuing and has progressed up to Level 7. The build-out of the Contractor designated “Priority” Rooms will open up areas of work for the MEP trades and assist in getting areas ready for permanent power this fall.

A very large emergency generator and fuel oil storage tank were delivered to the site and set in place during April. The access from the building (garage) entrance to the Generator Room was challenging but was well coordinated and accomplished without any issues.



Emergency Generator (above) and Fuel Oil Tank

The Final Design Package 13 was issue by the Design-Build Team early in April. They are continuing to work on the design of the Government authorized Enhancements and will be preparing Design Bulletins for distribution of the applicable information.



LACH³

APRIL 2015

The Courtroom Mockup is nearing completion and during the latter half of April, the stone for the wall behind the Judge's Bench arrived and was installed. The Mockup is scheduled to be complete by May 20th to permit viewing by the Stakeholders.

Design & Construction Activities Completed This Period

- Issued the Final Design Package 13
- Completed shear walls up to the bottom of the Roof Trusses at the Penthouse Level
- Completed concrete slab on the east side of the Penthouse Level
- Spray-applied fireproofing completed on Level 8, the framing for underside of Level 9
- Spray-applied fireproofing in progress at the Overhang below Level 2
- Delivered and set in place the Emergency Generator and Fuel Oil Storage Tank
- Placed first concrete for the Board Form walls of the Jury Assembly and Sallyport areas
- Installed the south Fire Shutter at Level 5 north and Level 7 south
- Commenced the installation of the Glazed Masonry for the main cell block

Activities for Next Period

- Complete slab on Penthouse Level, west side
- Release the temporary columns and remove from the site
- Continue shear wall concrete placement to incorporate the roof trusses
- Deliver AHU's for the remaining floors
- Complete all construction in the Transformer Vault and turn-over to DWP

Project Milestones

- Delivered and set Emergency Generator – 04 April
- Commenced GMU installation at Main Cell Block – 08 April
- Started the installation of the exterior Limestone – 09 April
- Delivered and set Fuel Oil Storage Tank – 18 April

Sustainability Features: Site Selection



LACH³

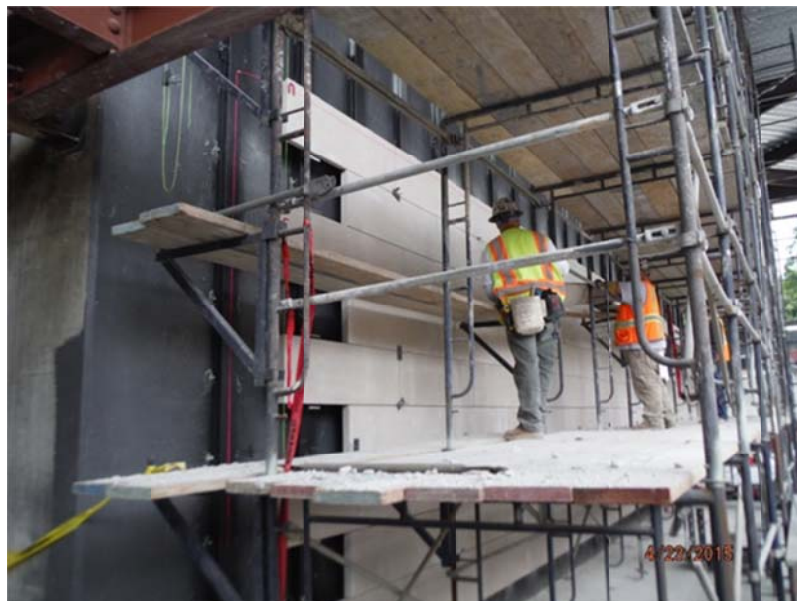
APRIL 2015

One of the most impactful sustainable features of the LA Federal Courthouse is its site. The location, in the urban, densely developed and easily accessible downtown Los Angeles contributes to several LEED credits and is designed to both utilize and contribute to the surrounding neighborhood.

The site meets the requirements of SSc1: Site Selection, purely by using previously developed land already altered by human activities, as opposed to an environmentally sensitive site, parkland or farmland. The location also allows the project team to achieve all 5 available points for SSc2: Development Density and Community Connectivity. This credit rewards the project for the density of the surrounding area and the preexistence of neighborhood services and residences.

In addition to businesses and amenities a strong network of public transportation is already established and can be used by future tenants and visitors. Multiple bus and metro lines are adjacent to the project and meet the requirements of SSc4.1: Alternative Transportation: Public Transportation Access. The lack of additional public parking helps to encourage the utilization of public transportation, walking and biking. Facilitating the use of alternate means of transportation not only reduces congestion and brings environmental benefits in the form of reduced greenhouse gas emissions, but it can also reduce commuting costs for building occupants.

Progress Photos



Limestone Installation at NW Quadrant



LACH³

APRIL 2015



Detention Frames for Attorney Interview Rooms



Board Form wall at Jury Assembly



LACH³

APRIL 2015



Penthouse Slab East



Steel Inspections at Roof Level