



LACH³



NEW UNITED STATES COURTHOUSE - LOS ANGELES, CA

February 2015

In February we started the steel erection of the final two levels of the building, the Mechanical Penthouse and Roof Levels, with completion or “topping out” scheduled for March 12th. This erection sequence has some of the more complicated assembly requirements that make up the roof trusses as seen by the photo below and creates what appears to be a maze across the Penthouse Level.



Roof Truss Pre-Assembly

The structural concrete shear walls are continuing closely behind the steel erection with walls in place up to Level 9. The design requires the encasement of the roof trusses up through the Roof Level once the steel is completed. The slabs on metal deck are also complete up through Level 9. The Contractor is working the forms for the concrete walls for the structures to the south of the main building that will house the Jury Assembly, Cafeteria, and Vehicle Sallyport services.

The work within the main building has included the start of the framing for the interior partitions in the Basement and on Level 2 for the walls critical to accommodate the installation of some of the overhead work of HVAC ductwork installation. These areas have already seen the installation of the fire sprinkler piping and the running of piping for the chilled water system that is required for the air conditioning and heating systems.

The equipment installation for the mechanical systems has made good progress with the placement of more of the pump units and piping connections to the major equipment. All of this equipment was scheduled for early delivery to permit the wall framing to commence as mentioned previously.



LACH³

February 2015

The first of the electrical switchgear was delivered and set in place this past month. The photo below shows the gear for the main electrical room in the Basement.



The delivery of air handling units occurred late in the month for the lower levels of the building and will open up a lot of work for the connection of ductwork and piping to the units. As mentioned last month, the work opportunities that are now starting will result in a climb in our on-site work force which will continue throughout the next year.

Work at the off-site Courtroom Mockup has seen the installation of the ceiling and associated lighting and speakers and the completion of the glazing for the clerestories. The start of the millwork for the Jury Box and Spectator Rail occurred this past month and will continue with the installation of the Judge's and Clerk's Benches.

Design & Construction Activities Completed This Period

- Design efforts are continuing with efforts to have all SME Review Comments completed and Enhancements incorporated into a Final "Conformed Set" of drawings by the end of March.
- Commenced erection of Tier #6, the Penthouse and Roof Levels.
- Completed shear walls up to Level 9 East
- Completed concrete slabs up through Level 9 East
- Spray-applied fireproofing on Level 6, the framing for underside of Level 7
- Delivered and set in place the Switchgear for the Main and Emergency Electrical Rooms
- Delivered and set on the Mezzanine Level the Air Handling Units



LACH³

February 2015

- Received and set the Condenser Water Pumps in the Basement Mechanical Room
- Commenced the light gauge framing for the Basement wall partitions
- Commenced the forms for the Board Form walls of the Jury Assembly and south Courtyard areas
- Started the installation of the support steel for the horizontal fire shutters at Levels 5, 7, and 9
- Commenced the application of the air barrier membrane on the shear walls at the Main building Level.

Activities for Next Period

- Complete slab on Level 9
- Complete shear wall concrete placement up through Level 9
- Complete steel erection of Tier #6, the Penthouse and Roof Levels, and conduct the “Topping-Out” ceremony on March 12th.
- Complete the first structural cast-in-place Board Form walls for the Jury Assembly and Courtyard area.
- Fireproofing on Level 7 and 8.

Project Milestones

- Delivered Mezzanine AHU’s – 27 Feb 2015
- Delivered the Main Electrical Switchgear – 21 Feb 2015
- Delivered and set the Condenser Water Pumps – 24 Feb 2015

Sustainability Features:

Construction Activity Pollution Prevention & SWPP Plan:

Construction sites, even in Southern California, have to prepare for weather events. To comply with stringent California codes and pre-requisite credit SSp1 for LEED, our team created a Sedimentation and Erosion Control Plan (SEC) as part of our Storm Water Pollution Prevention (SWPP) Plan before breaking ground. Throughout the project the team has monitored conditions and documented compliance through inspections, testing, and taking progress photos. The plan helps to prevent the loss of topsoil during construction and prevent sedimentation of local water during and after rain events, and prevents air pollution by



LACH³

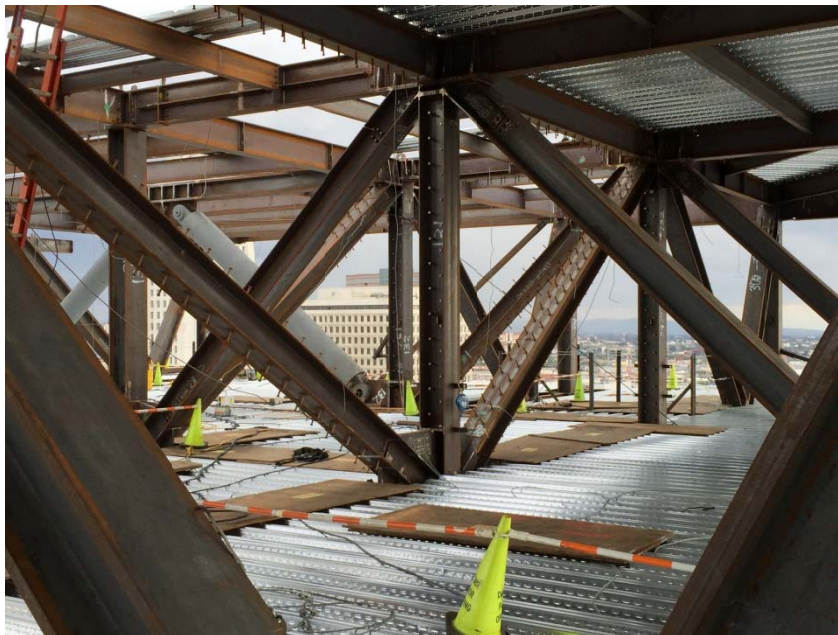
February 2015

particulate matter in especially dry conditions. Weather is monitored; before and after major weather events the site conditions are observed and recorded. If deemed necessary, extra precautionary measures are put in place to prevent the pollution of water off-site.

The project site slopes from west to east and is surrounded by a pre-existing concrete curb. This curb impedes the majority of possible run-off. As an additional precaution the team has installed a layer of a plastic “wattle” around the project perimeter that helps to block particulate and filter any water leaving the site. As necessary, the team has implemented “straw wattles”, gravel, and rumble plates. In instances where small amounts of solids are tracked from the entry gates, the material is swept back into the site.

In addition to these measures, site-wide good housekeeping helps to minimize the impact of construction on local environmental resources and surrounding properties.

Progress Photos



Southeast Roof Trusses on Penthouse



LACH³

February 2015



Condenser Water Pumps



Board Form Installation



LACH³

February 2015



South Elevation



Courtroom Mockup Millwork